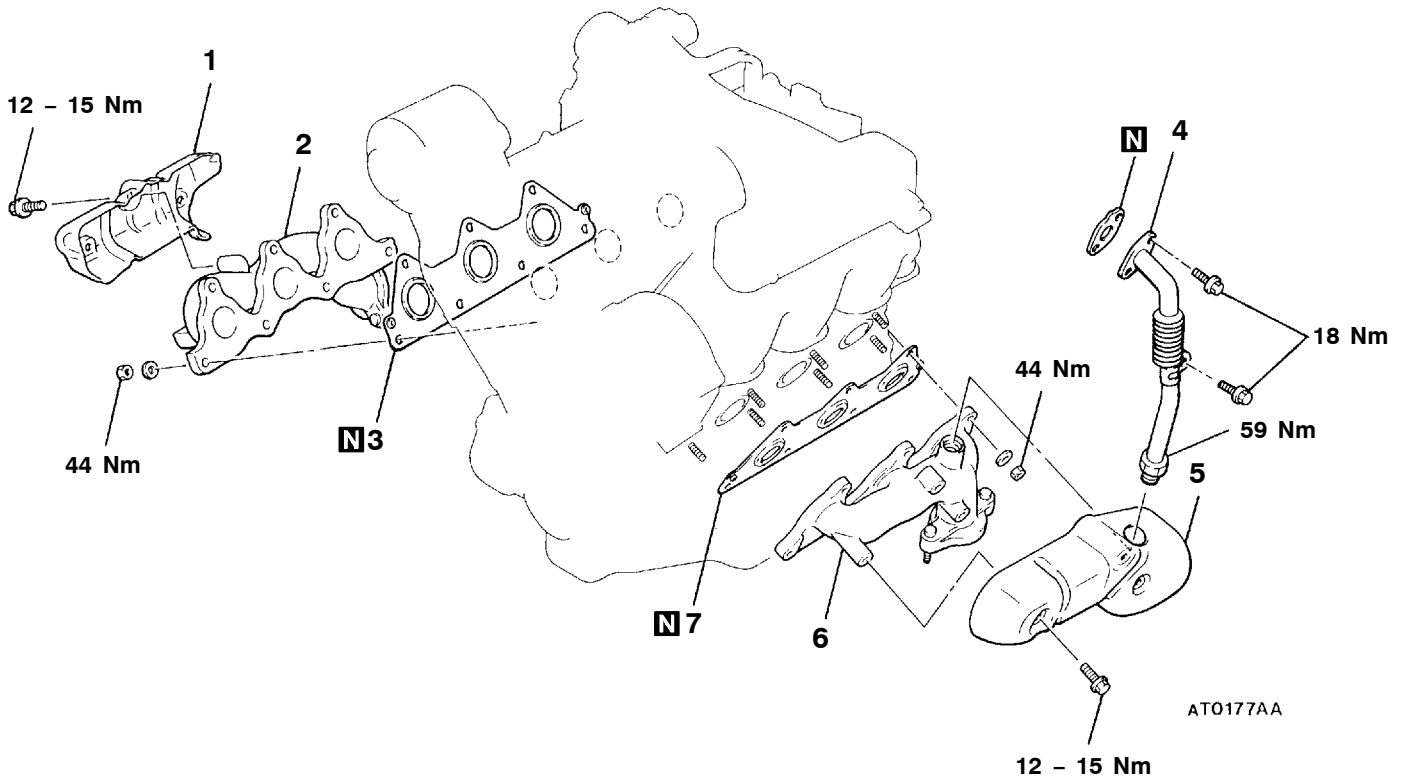


EXHAUST MANIFOLD <6G7>**REMOVAL AND INSTALLATION****Pre-removal and Post-installation Operation**

- Front Exhaust Pipe Removal and Installation (Refer to P.15-19.)
- Air Cleaner Removal and Installation (Refer to P.15-4.)
- Battery and Battery Tray Removal and Installation
- Engine Oil Dipstick Guide Removal and Installation

**Removal steps**

- | | |
|-----------------------------------|-----------------------------------|
| 1. Heat protector (R.H.) | 5. Heat protector (L.H.) |
| 2. Exhaust manifold (R.H.) | 6. Exhaust manifold (L.H.) |
| 3. Exhaust manifold gasket (R.H.) | 7. Exhaust manifold gasket (L.H.) |
| 4. EGR pipe | |

INSPECTION

15100340160

Check the following points; replace the part if a problem is found.

EXHAUST MANIFOLD CHECK

1. Check for damage or cracking of any part.
2. Using a straight edge and a feeler gauge, check for distortion of the cylinder head installation surface.

Standard value: 0.15 mm or less

Limit: 0.20 mm